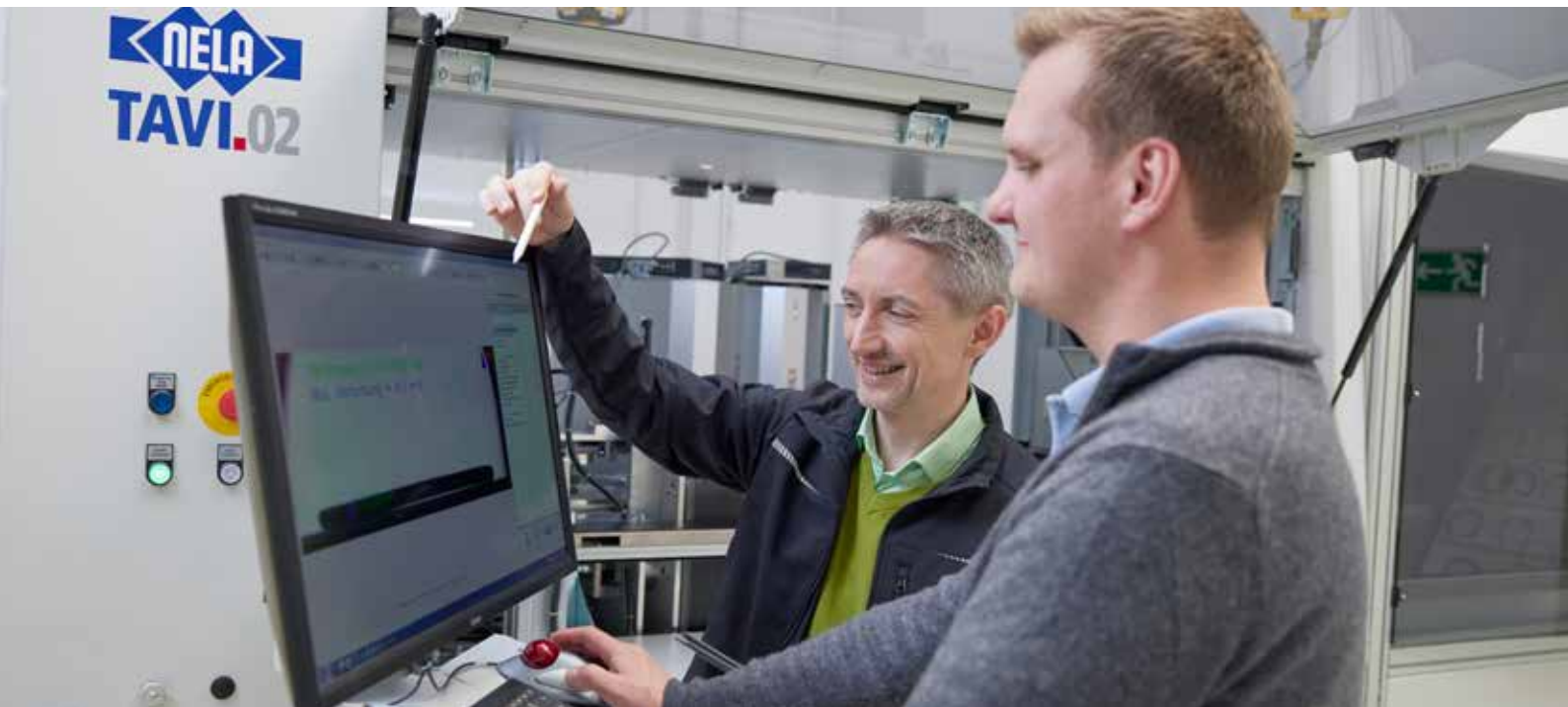




see. control. automate.



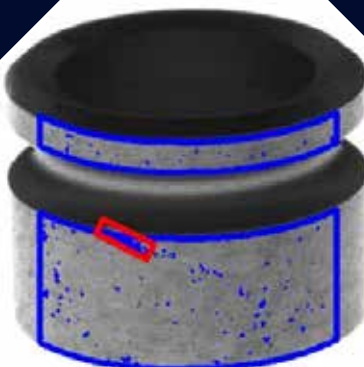
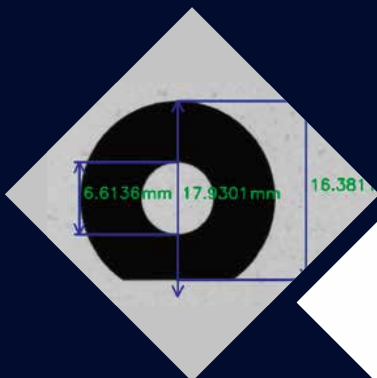
VisionCheck

Machine Vision Software

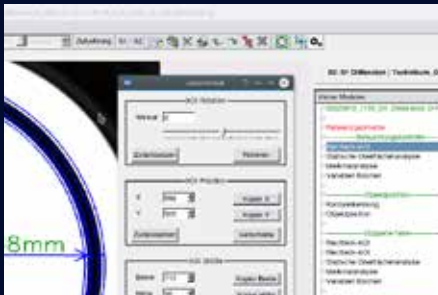
The image processing software VisionCheck from NELA is a comprehensive software for the program-based inspection of dimensional accuracy, as well as thread and surface inspection of serial parts.

It offers extensive functions for data exchange, e.g.:

- OPC-UA-Interface for status information
- MDA-PDA-Interface
- Measurement value output



Quality is Everything



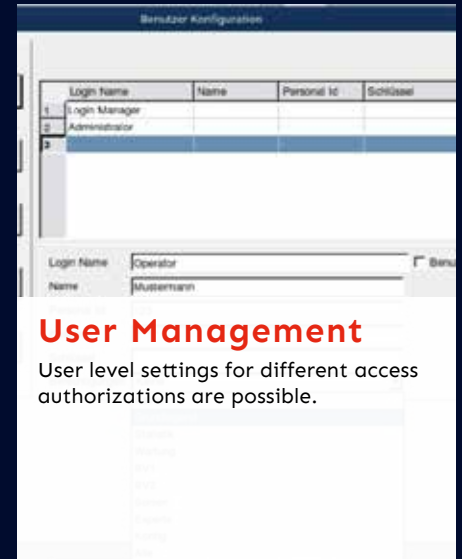
Modular Design

A large number of modules enables the intuitive creation of inspection programs for dimensional accuracy, thread and surface control.



Intuitive Interface

All essential parameters are set via the clearly laid out user interface.



User Management

User level settings for different access authorizations are possible.



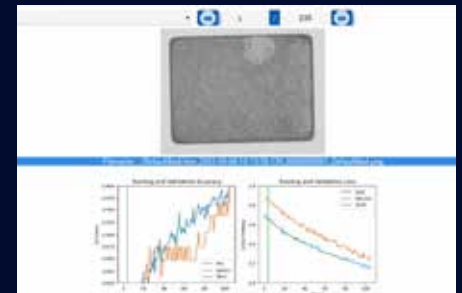
Statistics Function

Display and output of statistics for the overall evaluation or for individual inspection sensors.



Communication

All inspection systems and integration sensors are available with Industry 4.0 communication based on the OPC-UA standard, as well as MDA/PDA interfaces. This enables cross-factory communication.



Deep Learning

Deep learning-based image analysis delivers excellent results, e.g. in complex cosmetic inspections, in the classification of texture and material, or in the localization of deformed and variable features.



see. control. automate.

Brüder Neumeister GmbH

Gottlieb-Daimler-Straße 15 | D-77933 Lahr | Tel.: 07821 5808-0 | sales@nela.de